



Lift Station Notifier

Description

The I-Link® Lift Station Notifier is a remote monitoring system designed specifically for use in monitoring pump lift stations and other pumping applications. The system consists of the I-Link® LSN 200 hardware interface and customized data access through a MeshVista™ data portal. The data portal provides access to status of the monitored equipment, administrative services, report generation, and alarm notifications. The LSN 200 unit uses an integral cell-based communications gateway to forward alarms and status data to the data portal.

Communications

All I-Link® remote devices use the GSM cellular networking technology to provide two-way communications between the data portal and the remote equipment. The I-Link® Notifier device contains a built-in cellular gateway module and a user-mounted antenna. The gateway also contains a removable SIM card that contains the configuration and network personality information needed to connect to the local cell network. The SIM card is associated with ongoing data services and is a necessary component to guarantee connectivity to the local cell service provider. The LSN 200 unit is shipped with a pre-configured SIM card that must be inserted and activated prior to installation and start-up.

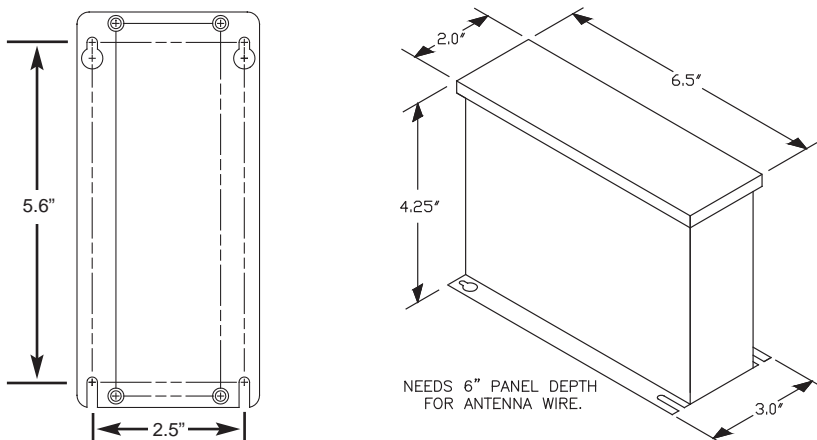
Data Interface

The LSN 200 uses standards-based methods of presenting data and providing alarm condition notifications. Alarms are forwarded to users with SMS (text) messaging services and/or standard email. The notifications contain information on the device and the alarm condition so proper response activities can be initiated immediately. Email notifications are sent out according to a user-defined escalation scheme to determine who gets the messages. The LSN 200 also comprises a dedicated webpage accessible only by users with secure login credentials. The website provides the user tools to monitor and manage remote assets.

LSN 200

The LSN 200 requires a 12-24 VDC power source and can be mounted directly in a control panel. Standard models are shipped with a high-gain antenna and a cell service SIM card. Contact SJE-Rhombus Sales Engineers for further details.

Dimensions & Mounting Use #8 screws



Patent Pending

Features

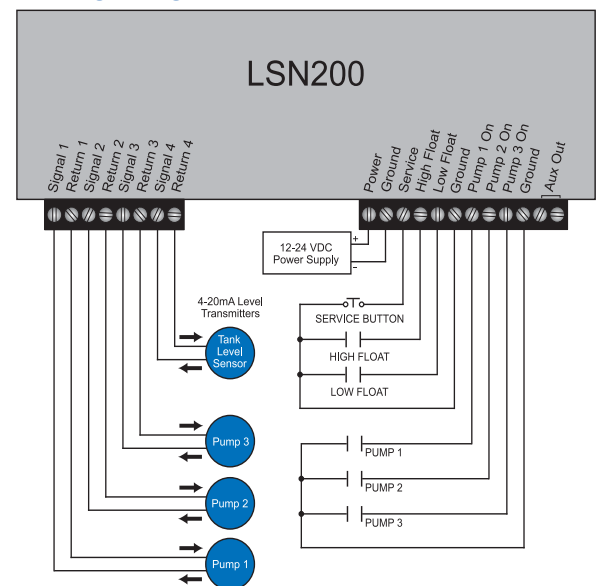
- Power Fail Detection
- Service Button Interface
- High Level Alarm
- Low Level Alarm
- (3) Pump Run Time/Cycle Count Inputs
- (3) 4-20mA Pump Current Input
- 4-20mA Continuous Level Sensor Input
- Digital Relay Output
- Status and Input Indicator LEDs

Power	12VDC @ 330mA 24VDC @ 170mA
Storage Temperature	-40°F to 156°F (-40°C to 70°C)
Operating Temperature	-21°F to 156°F (-30°C to 70°C)
Humidity	0-100% non-condensing
ESD Immunity	EN61000-4-2
Radiated Immunity	EN61000-4-3
EFT/Burst Immunity	EN61000-4-4
Conducted Immunity	EN61000-4-6
Radiated Emissions	FCC Part 15 - Class A EN61326-1:2006 Class A EN55011:2007+A2:2007 (CISPR 11)



ID # R17GE864

Wiring Diagram





Data Services

The I-Link[®] LSN 200 includes access to a **secure, custom website** to allow monitoring and administration of the LSN 200 device and its data. The data is transported over standard GSM Networks (cell networks). As such, the device includes a SIM card and cell network service fees apply.

An **Account Service Activation Form** must be filled out by the end user which establishes an account for service fee billing and provides details of the device application for webpage set-up.

Activation of the remote data services cannot be done until the form is received. Within 48 hours of receiving the form, a webpage will be set up and an email notification shall be sent to the user's address as listed on the form. This email message contains a user name and password to allow access to the website. Upon logging on to the site for the first time, the user will be asked to accept the end-user license agreement.

Warranty

SJE-Rhombus' sole and exclusive warranty regarding the Notification Services is such that services provided directly by SJERhombus shall perform in conformity with standard industry practices. SJERhombus shall provide a two-year limited warranty on all equipment provided.

Ordering Information

Please use the following information to place your order for the I-Link[®] Lift Station Notifier:

Part Number	Description
1022636	LSN 200, 12" antenna
1022637	LSN 200, 32" antenna

Contact SJERhombus Sales Engineers for more information on I-Link[™] in an engineered panel at

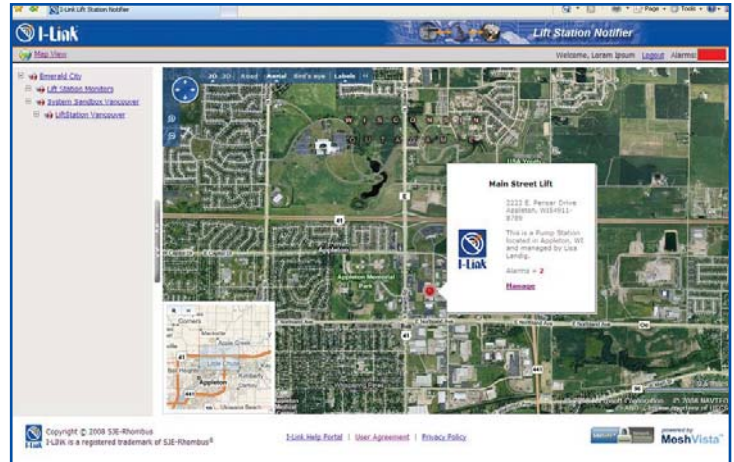
1-800-RHOMBUS (746-6287)



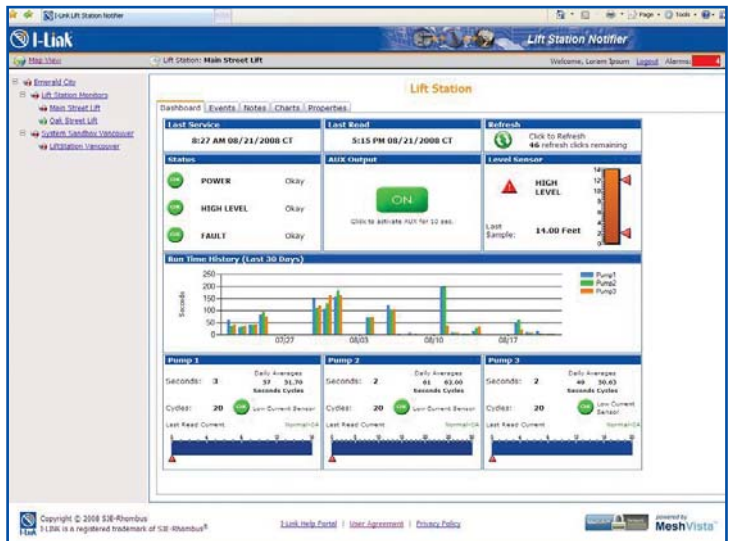
22650 County Highway 6 PO Box 1708
Detroit Lakes, MN 56502 USA

Phone: 218-847-1317 Fax: 218-847-4617

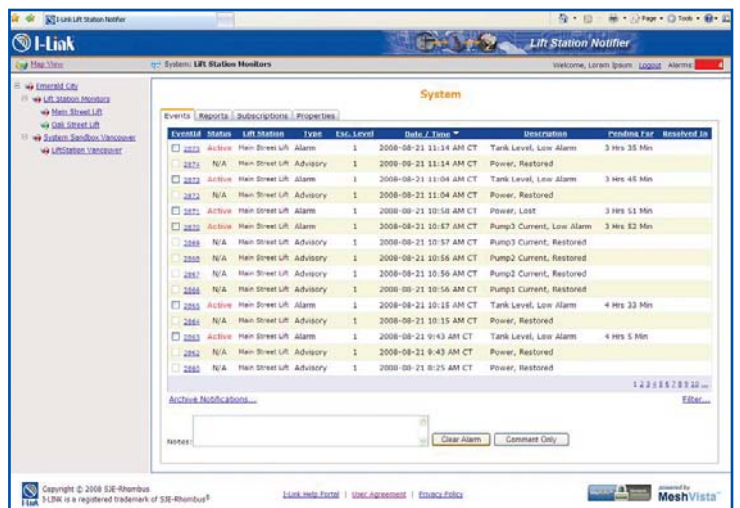
www.sjerhombus.com



Map View Screen



Dashboard Screen



Alarm Screen